

H

G

F

E

D

C

B

A

H

G

F

E

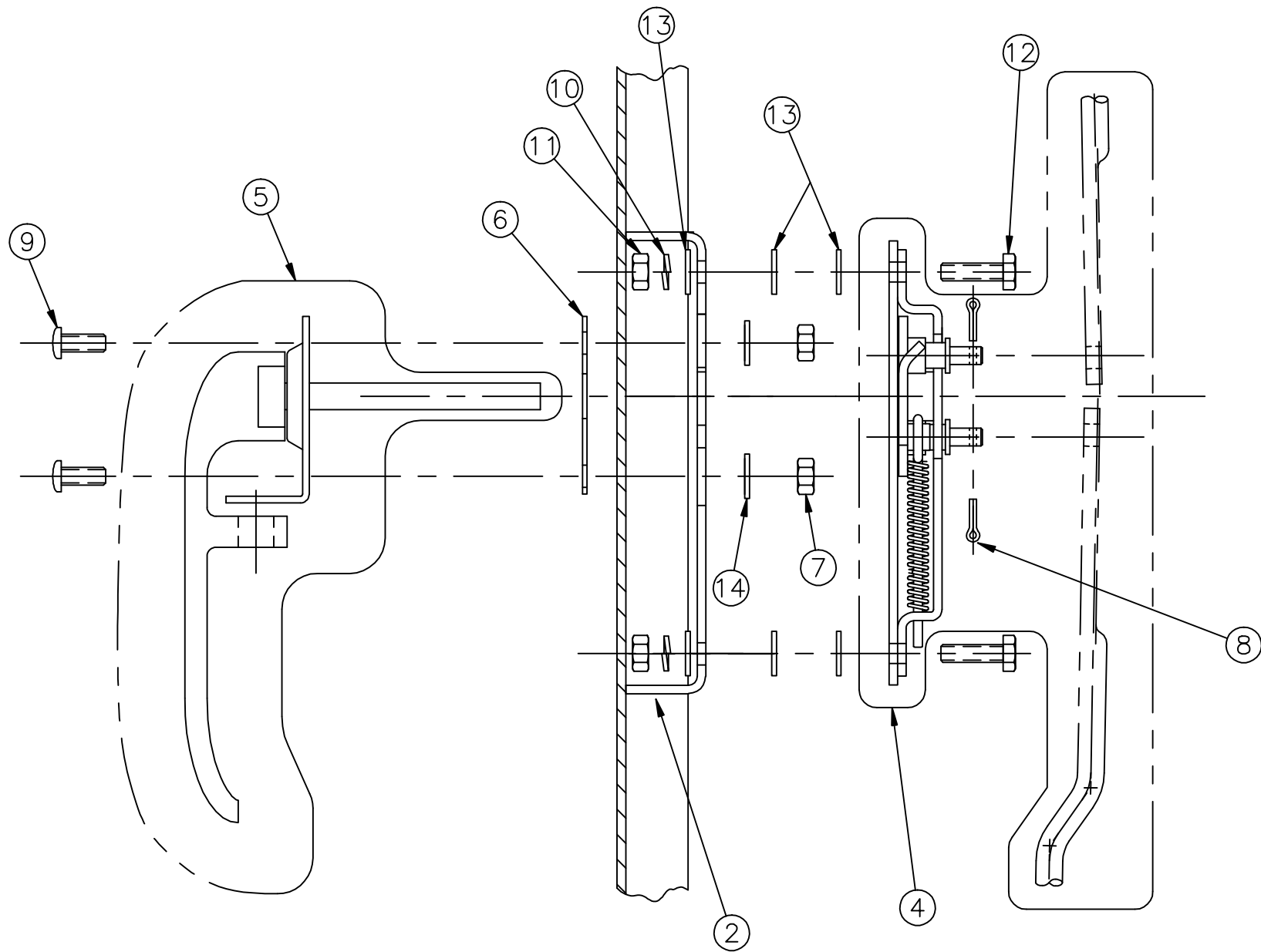
D

C

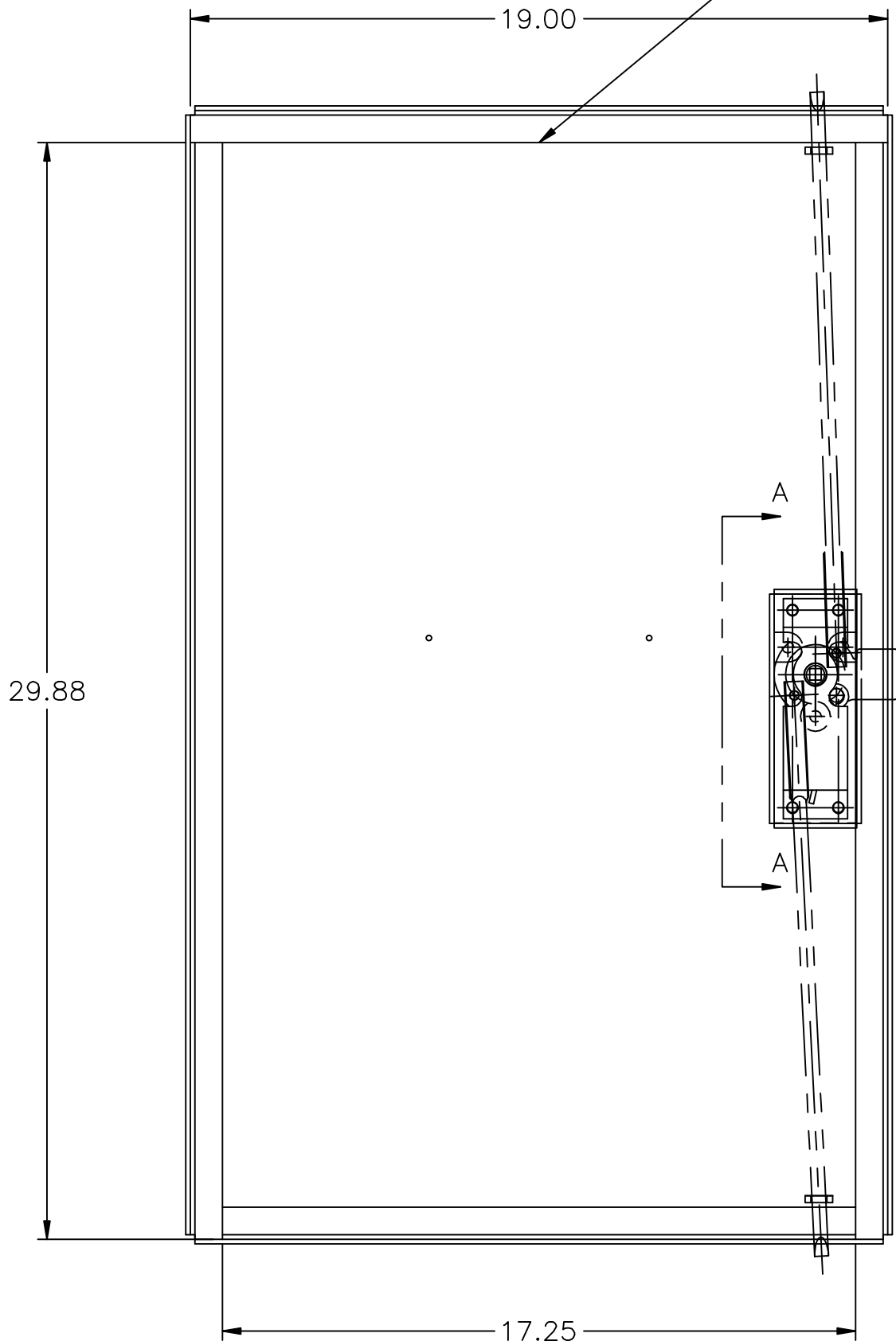
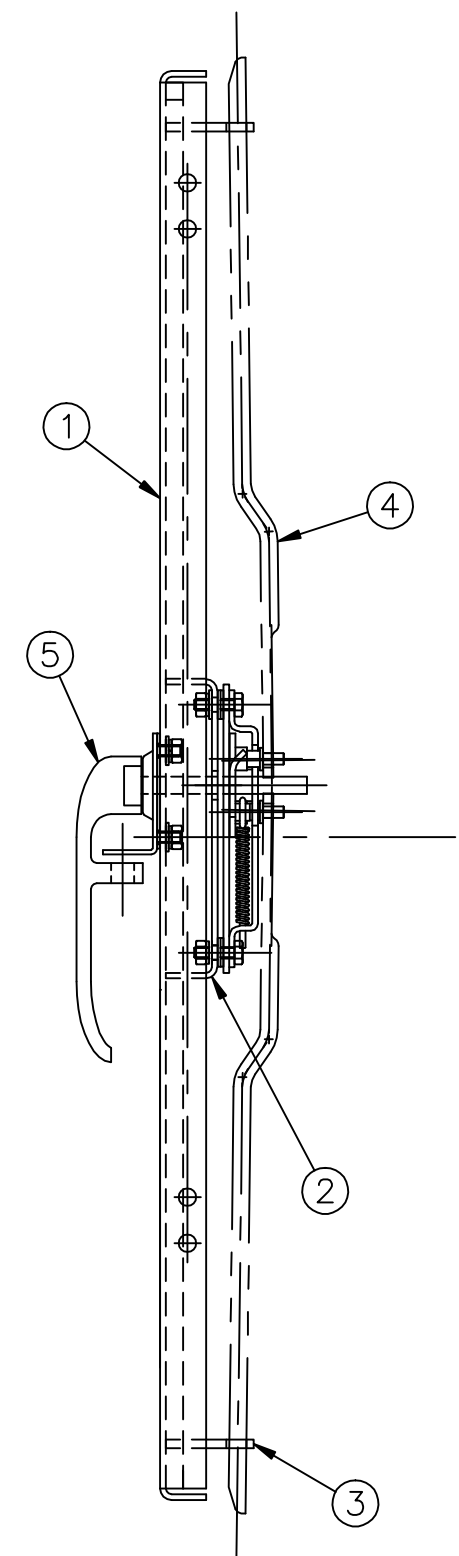
B

A

REVISIONS				
ZONE	REV	DESCRIPTION	DATE	APPROVED
	0	RELEASED PER ECO: 110042		
	1	ECO 120160: ADDED DOOR GASKET	11/27/12	C.R.



SECTION A-A
SCALE: 1:2



EPDM-NEOPRENE SPONGE 0.75" OR 19 MM WIDE, 0.38" OR 10 MM THK.
CLOSED CELLS NO SKIN
ATTACHED BY GLUE
QTY=1 (L=3058 MM)

CAUTION:
OBSERVE GASKET ORIENTATION

- NOTES:
- THIS DRAWING IS DIMENSIONED IN ACCORDANCE WITH ANSI Y14.5M-1982
 - ALL INSIDE BENDING RADII SHALL BE 1/8", UNLESS OTHERWISE NOTED.
 - MATERIAL(S): (SEE PARTS LIST)
 - FINISH: REMOVE ALL BURRS AND SHARP EDGES
 - THIS DRAWING WAS MADE FROM HVB DRAWING# 40-0101-XX

3	14	--	--	WASHER, FLAT #10, ZINC
12	13	--	--	WASHER, FLAT 1/4", ZINC
4	12	--	--	BOLT, H/H 1/4-20UNC X 7/8", ZINC
4	11	--	--	NUT, 1/4", ZINC
4	10	--	--	WASHER, LOCK 1/4", ZINC
3	9	--	--	SCREW, PAN HEAD #10 X 3/4", STAINLESS
2	8	--	--	COTTER PIN, #3/32" X 3/4", ZINC
3	7	--	--	NUT, SELF LOCKING, #10, ZINC
1	6	01-1064-00	--	GASKET, DOOR HANDLE
1	5	12-0302-XX	0	ASSY., HANDLE, DOOR (SS OPT.)
1	4	12-0705-XX	0	ASSY., LATCH, (3 PT. OPT.)
2	3	--	--	GUIDE ALUMINUM, 0.75 X 0.125 THICK
1	2	--	--	SUPPORT, ALUMINUM 0.125" THICK
1	1	--	--	DOOR, ALUMINUM 0.125" THICK
QUANTITY / PART GROUP		ITEM #	PART #	REV.
GROUPS		DESCRIPTION, MATERIAL		

UNLESS OTHERWISE SPECIFIED DIMENSIONS ARE IN INCHES. DO NOT SCALE DRAWING. TOLERANCES: .XX ± 0.02 .XXX ± 0.015 ANG. ± 1°		TITLE: CULLINAN		
THIRD ANGLE PROJ.		SIZE	FSCM NO.	REV.
DRAWN BY: C. REIT		DATE: 5/4/11	D	40-0117-XX
ENGRD BY:		DATE:	SCALE: 1:4	WEIGHT (LBS): N/A
				CONT. ON SHT. 2 SHT NO. 1